



Vispar Coupling Valve

Inlet size: 1", 1 1/2", 2"

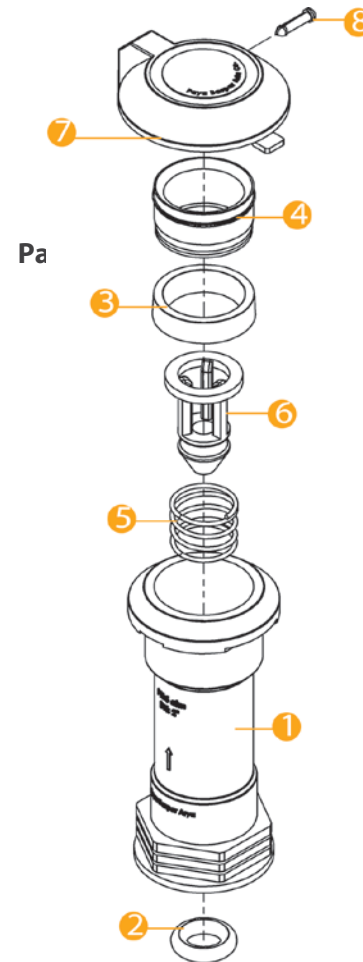
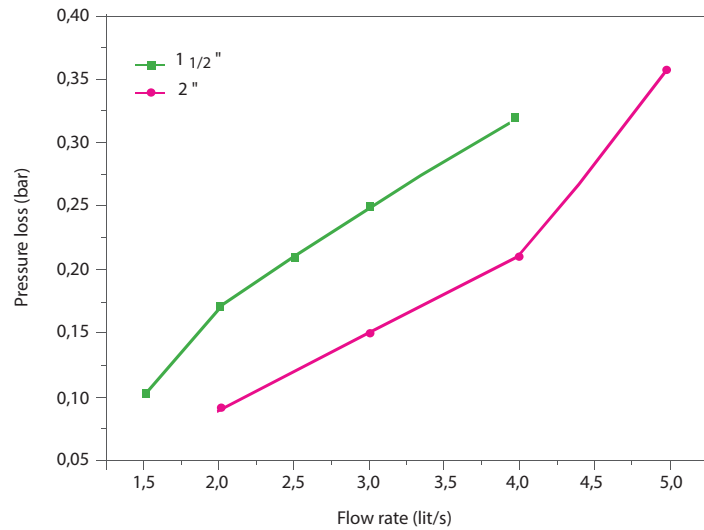
Description

- Nominal pressure: PN 6
- Low pressure loss
- Smooth inner wall, reducing pressure loss and increasing flow speed
- High resistance to UV sunlight
- Resistance to deposition
- Soft colors and excellent design
- High ability in chemical corrosion resistance
- Maintenance, replacement and remove convenient

Resistance to Internal Hydrostatic Pressure Test (ISO 1-9393)

Testing Temperature(°C)	Testing Pressure (bar)	Testing Time(hour)	Result
23	9	1	Good





No.	Name	Material
1	Body	Polyacetal / PP Nanocomposite
2	O-Ring	NR/SBR
3	Seal	NR/SBR
4	Bush	Polyacetal
5	Spring	Stainless Steel
6	Supap	Polyacetal
7	Cap	PP
8	Pin	Polyacetal

Durability Test

Testing Method	Samples	Result
500 times valve opening and closing at hydrostatic pressure of 6 bar	Test samples of pressure and durability tests	Good

Valve Sealing

Testing Temperature(°C)	Testing Pressure (bar)	Testing Time(min)	Result
23	9	5	No Leakage
23	30	60	No Leakage